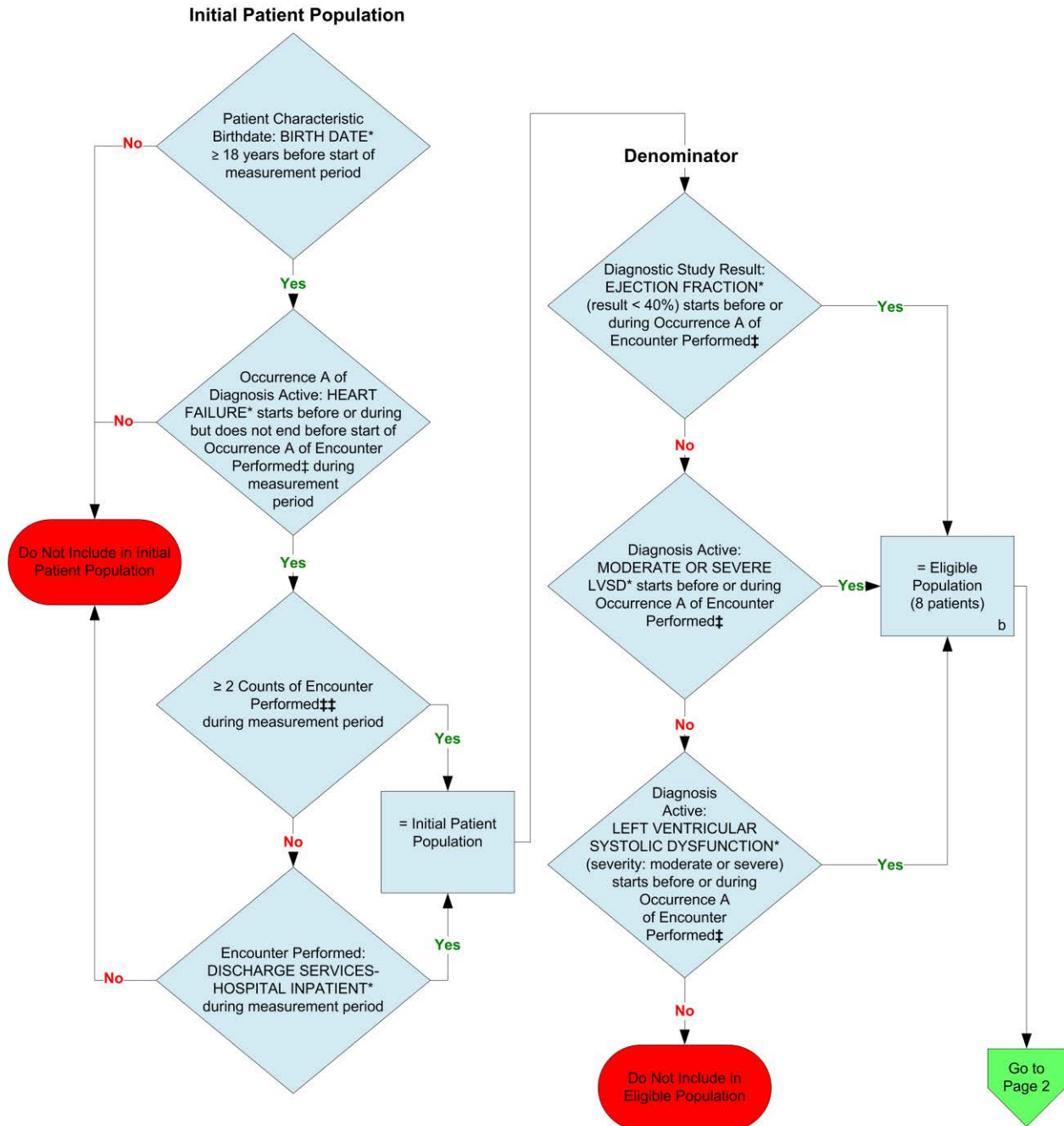
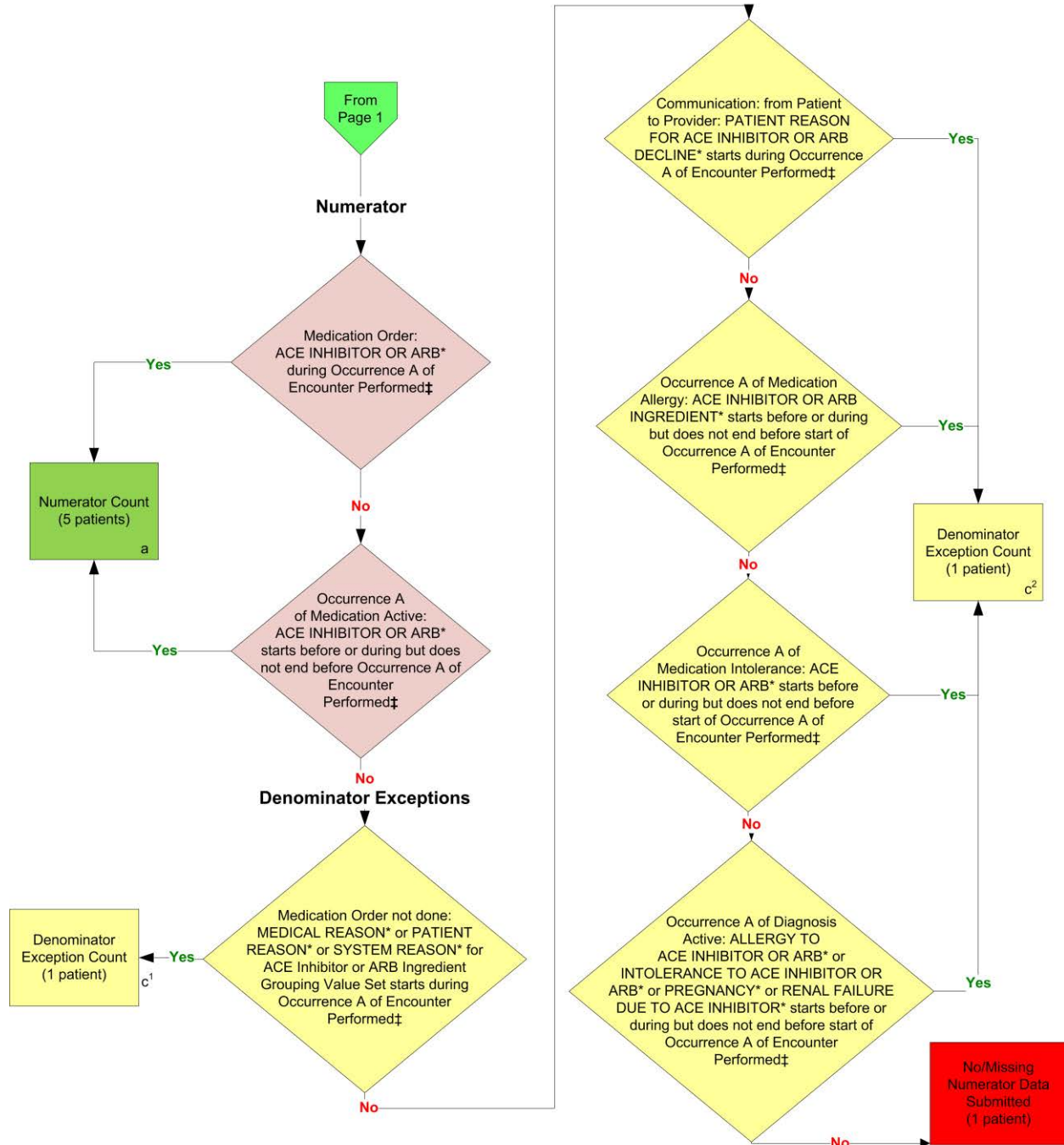


2014 eCQM Flow
Measure Identifier: CMS135v3
NQF 0081: Heart Failure (HF): Angiotensin-Converting Enzyme (ACE) Inhibitor or Angiotensin Receptor Blocker (ARB)
Therapy for Left Ventricular Systolic Dysfunction (LVSD)



*Please refer to the specific section of the eCQM to identify the QDM data elements and associated value sets for use in reporting this eCQM.
‡ Appropriate encounters include: Care Services in Long-Term Residential Facility, Home Healthcare Services, Nursing Facility Visit, Office Visit, Outpatient Consultation, and Face-to-Face Interaction.
‡‡ Appropriate encounters include, Care Services in Long-Term Residential Facility, Home Healthcare Services, Nursing Facility Visit, Office Visit, Outpatient Consultation, and Patient Provider Interaction.

2014 eCQM Flow
Measure Identifier: CMS135v3
NQF 0081: Heart Failure (HF): Angiotensin-Converting Enzyme (ACE) Inhibitor or Angiotensin Receptor Blocker (ARB)
Therapy for Left Ventricular Systolic Dysfunction (LVSD)



*Please refer to the specific section of the eCQM to identify the QDM data elements and associated value sets for use in reporting this eCQM.
‡ Appropriate encounters include: Care Services in Long-Term Residential Facility, Home Healthcare Services, Nursing Facility Visit, Office Visit, Outpatient Consultation, Face-to-Face Interaction, and Discharge Services – Hospital Inpatient.

2014 eCQM Flow

Measure Identifier: CMS135v3

NQF 0081: Heart Failure (HF): Angiotensin-Converting Enzyme (ACE) Inhibitor or Angiotensin Receptor Blocker (ARB)
Therapy for Left Ventricular Systolic Dysfunction (LVSD)

SAMPLE CALCULATION:

Performance Rate=

Numerator (a= 5 patients)

Denominator (b=8 patients) – *Denominator Exclusions (N/A)* – Denominator Exceptions ($c^1 + c^2 = 2$ patients) = 83.33%

2014 eCQM Flows

Measure Identifier: CMS135v3

NQF 0081: Heart Failure (HF): Angiotensin-Converting Enzyme (ACE) Inhibitor or Angiotensin Receptor Blocker (ARB) Therapy for Left Ventricular Systolic Dysfunction (LVSD)

Please refer to the specific section of the eCQM to identify the QDM data elements and associated value sets for use in reporting this eCQM.

1. Start Initial Patient Population
2. Check Patient Characteristic Birthdate:
 - a. If the QDM data element, BIRTH DATE, is greater than or equal to 18 years starts before start of measurement period, equals No, do not include in Initial Patient Population. Stop Processing.
 - b. If the QDM data element, BIRTH DATE, is greater than or equal to 18 years starts before start of measurement period, equals Yes, proceed to check Diagnostic Active.
3. Check Diagnosis Active:
 - a. If Occurrence A of the QDM data element, HEART FAILURE, starts before or during but does not end before start of Occurrence A of Encounter Performed the QDM data element, CARE SERVICES IN LONG-TERM RESIDENTIAL FACILITY, during measurement period equals No, proceed to check next Diagnosis Active.
 - b. If Occurrence A of the QDM data element, HEART FAILURE, starts before or during but does not end before start of Occurrence A of Encounter Performed the QDM data element, CARE SERVICES IN LONG-TERM RESIDENTIAL FACILITY, during measurement period equals Yes, proceed to check Encounter Performed.
 - c. If the QDM data element, HEART FAILURE, starts before or during but does not end before start of Occurrence A of Encounter Performed the QDM data element, HOME HEALTHCARE SERVICES, during measurement period equals No, proceed to check next Diagnosis Active.
 - d. If the QDM data element, HEART FAILURE, starts before or during but does not end before start of Occurrence A of Encounter Performed the QDM data element, HOME HEALTHCARE SERVICES, during measurement period equals Yes, proceed to check Encounter Performed.
 - e. If the QDM data element, HEART FAILURE, starts before or during but does not end before start of Occurrence A of Encounter Performed the QDM data element, NURSING FACILITY VISIT, during measurement period equals No, proceed to check next Diagnosis Active.
 - f. If the QDM data element, HEART FAILURE, starts before or during but does not end before start of Occurrence A of Encounter Performed the QDM data element, NURSING FACILITY VISIT, during measurement period equals Yes, proceed to check Encounter Performed.
 - g. If the QDM data element, HEART FAILURE, starts before or during but does not end before start of Occurrence A of Encounter Performed the QDM data

- element, OFFICE VISIT, during measurement period equals No, proceed to check next Diagnosis Active.
 - h. If the QDM data element, HEART FAILURE, starts before or during but does not end before start of Occurrence A of Encounter Performed the QDM data element, OFFICE VISIT, during measurement period equals Yes, proceed to check Encounter Performed.
 - i. If the QDM data element, HEART FAILURE, starts before or during but does not end before start of Occurrence A of Encounter Performed the QDM data element, OUTPATIENT CONSULTATION, during measurement period equals No, proceed to check next Diagnosis Active.
 - j. If the QDM data element, HEART FAILURE, starts before or during but does not end before start of Occurrence A of Encounter Performed the QDM data element, OUTPATIENT CONSULTATION, during measurement period equals Yes, proceed to check Encounter Performed.
 - k. If the QDM data element, HEART FAILURE, starts before or during but does not end before start of Occurrence A of Encounter Performed the QDM data element, FACE-TO-FACE INTERACTION, during measurement period equals No, do not include in Initial Patient Population. Stop Processing.
 - l. If the QDM data element, HEART FAILURE, starts before or during but does not end before start of Occurrence A of Encounter Performed the QDM data element, FACE-TO-FACE INTERACTION, during measurement period equals Yes, proceed to check Encounter Performed.
4. Check Encounter Performed: Total number of encounters must be greater than or equal to 2:
- a. If the QDM data element, CARE SERVICES IN LONG-TERM RESIDENTIAL FACILITY, during the measurement period, equals No, proceed to check next Encounter Performed.
 - b. If the QDM data element, CARE SERVICES IN LONG-TERM RESIDENTIAL FACILITY, during the measurement period, equals Yes, include in the Initial Patient Population and proceed to check for another Encounter Performed until total number of encounters are greater than or equal to 2.
 - c. If the QDM data element, HOME HEALTHCARE SERVICES, during the measurement period, equals No, proceed to check next Encounter Performed.
 - d. If the QDM data element, HOME HEALTHCARE SERVICES during the measurement period, equals Yes, include in the Initial Patient Population and proceed to check for another Encounter Performed until total number of encounters are greater than or equal to 2.
 - e. If the QDM data element, NURSING FACILITY VISIT, during the measurement period, equals No proceed to check next Encounter Performed.
 - f. If the QDM data element, NURSING FACILITY VISIT, equals Yes, during the measurement period, include in the Initial Patient Population and proceed to check for another Encounter Performed until total number of encounters are greater than or equal to 2.
 - g. If the QDM data element, OFFICE VISIT, during the measurement period, equals No proceed to check next Encounter Performed.
 - h. If the QDM data element, OFFICE VISIT, equals Yes, during the measurement period, include in the Initial Patient Population and proceed to check for another Encounter Performed until total number of encounters are greater than or equal to 2.

- i. If the QDM data element, OUTPATIENT CONSULTATION, during the measurement period, equals No, proceed to check next Encounter Performed.
 - j. If the QDM data element, OUTPATIENT CONSULTATION, equals Yes, during the measurement period, include in the Initial Patient Population and proceed to check for another Encounter Performed until total number of encounters are greater than or equal to 2.
 - k. If the QDM data element, PATIENT PROVIDER INTERACTION, equals No, during the measurement period, proceed to check Encounter Performed.
 - l. If the QDM data element, PATIENT PROVIDER INTERACTION, equals Yes, during the measurement period, include in the Initial Patient Population and proceed to the Denominator if total number of encounters are greater than or equal to 2.
- 5. Check Encounter Performed:
 - a. If the QDM data element, DISCHARGE SERVICES – HOSPITAL INPATIENT, during the measurement period, equals No, do not include in the Initial Patient Population. Stop Processing.
 - b. If the QDM data element, DISCHARGE SERVICES – HOSPITAL INPATIENT, during the measurement period, equals Yes, include in the Initial Patient Population and proceed to the Denominator.
- 6. Start Denominator
 - a. Denominator equals the Initial Patient Population.
- 7. Check Diagnostic Study Result:
 - a. If the QDM data element, EJECTION FRACTION (result less than 40%), starts before or during Occurrence A of Encounter Performed the QDM data element, CARE SERVICES IN LONG-TERM RESIDENTIAL FACILITY, equals No, proceed to check next Diagnostic Study Result.
 - b. If the QDM data element, EJECTION FRACTION (result less than 40%), starts before or during Occurrence A of Encounter Performed the QDM data element, CARE SERVICES IN LONG-TERM RESIDENTIAL FACILITY, equals Yes, include in Eligible Population Count, which is represented by letter B in the sample calculation listed at the end of this document. Letter B equals 8 patients and proceed to the Numerator.
 - c. If the QDM data element, EJECTION FRACTION (result less than 40%), starts before or during Occurrence A of Encounter Performed the QDM data element, DISCHARGE SERVICES – HOSPITAL INPATIENT, equals No, proceed to check next Diagnostic Study Result.
 - d. If the QDM data element, EJECTION FRACTION (result less than 40%), starts before or during Occurrence A of Encounter Performed the QDM data element, DISCHARGE SERVICES – HOSPITAL INPATIENT, equals Yes, include in Eligible Population Count, which is represented by letter B in the sample calculation listed at the end of this document. Letter B equals 8 patients and proceed to the Numerator.
 - e. If the QDM data element, EJECTION FRACTION (result less than 40%), starts before or during Occurrence A of Encounter Performed the QDM data element, HOME HEALTHCARE SERVICES, equals No, proceed to check next Diagnostic Study Result.
 - f. If the QDM data element, EJECTION FRACTION (result less than 40%), starts before or during Occurrence A of Encounter Performed the QDM data element,

- HOME HEALTHCARE SERVICES, equals Yes, include in Eligible Population Count, which is represented by letter B in the sample calculation listed at the end of this document. Letter B equals 8 patients and proceed to the Numerator.
- g. If the QDM data element, EJECTION FRACTION (result less than 40%), starts before or during Occurrence A of Encounter Performed the QDM data element, NURSING FACILITY VISIT, equals No, proceed to check next Diagnostic Study Result.
 - h. If the QDM data element, EJECTION FRACTION (result less than 40%), starts before or during Occurrence A of Encounter Performed the QDM data element, NURSING FACILITY VISIT, equals Yes, include in Eligible Population Count, which is represented by letter B in the sample calculation listed at the end of this document. Letter B equals 8 patients and proceed to the Numerator.
 - i. If the QDM data element, EJECTION FRACTION (result less than 40%), starts before or during Occurrence A of Encounter Performed the QDM data element, OFFICE VISIT, equals No, proceed to check next Diagnostic Study Result.
 - j. If the QDM data element, EJECTION FRACTION (result less than 40%), starts before or during Occurrence A of Encounter Performed the QDM data element, OFFICE VISIT, equals Yes, include in Eligible Population Count, which is represented by letter B in the sample calculation listed at the end of this document. Letter B equals 8 patients and proceed to the Numerator.
 - k. If the QDM data element, EJECTION FRACTION (result less than 40%), starts before or during Occurrence A of Encounter Performed the QDM data element, OUTPATIENT CONSULTATION, equals No, proceed to check next Diagnostic Study Result.
 - l. If the QDM data element, EJECTION FRACTION (result less than 40%), starts before or during Occurrence A of Encounter Performed the QDM data element, OUTPATIENT CONSULTATION, equals Yes, include in Eligible Population Count, which is represented by letter B in the sample calculation listed at the end of this document. Letter B equals 8 patients and proceed to the Numerator.
 - m. If the QDM data element, EJECTION FRACTION (result less than 40%), starts before or during Occurrence A of Encounter Performed the QDM data element, FACE-TO FACE INTERACTION, equals No, proceed to check Diagnosis Active.
 - n. If the QDM data element, EJECTION FRACTION (result less than 40%), starts before or during Occurrence A of Encounter Performed the QDM data element, FACE-TO FACE INTERACTION, equals Yes, include in Eligible Population Count, which is represented by letter B in the sample calculation listed at the end of this document. Letter B equals 8 patients and proceed to the Numerator.
8. Check Diagnosis Active:
- a. If the QDM data element, MODERATE OR SEVERE LVSD, starts before or during Occurrence A of Encounter Performed the QDM data element, CARE SERVICES IN LONG-TERM RESIDENTIAL FACILITY, equals No, proceed to check next Diagnosis Active.
 - b. If the QDM data element, MODERATE OR SEVERE LVSD, starts before or during Occurrence A of Encounter Performed the QDM data element, CARE SERVICES IN LONG-TERM RESIDENTIAL FACILITY, equals Yes, include in Eligible Population Count, which is represented by letter B in the sample calculation listed at the end of this document. Letter B equals 8 patients and proceed to the Numerator.
 - c. If the QDM data element, MODERATE OR SEVERE LVSD, starts before or during Occurrence A of Encounter Performed the QDM data element,

DISCHARGE SERVICES – HOSPITAL INPATIENT, equals No, proceed to check next Diagnosis Active.

- d. If the QDM data element, MODERATE OR SEVERE LVSD, starts before or during Occurrence A of Encounter Performed the QDM data element, DISCHARGE SERVICES – HOSPITAL INPATIENT, equals Yes, include in Eligible Population Count, which is represented by letter B in the sample calculation listed at the end of this document. Letter B equals 8 patients and proceed to the Numerator.
- e. If the QDM data element, MODERATE OR SEVERE LVSD, starts before or during Occurrence A of Encounter Performed the QDM data element, HOME HEALTHCARE SERVICES, equals No, proceed to check next Diagnosis Active.
- f. If the QDM data element, MODERATE OR SEVERE LVSD, starts before or during Occurrence A of Encounter Performed the QDM data element, HOME HEALTHCARE SERVICES, equals Yes, include in Eligible Population Count, which is represented by letter B in the sample calculation listed at the end of this document. Letter B equals 8 patients and proceed to the Numerator.
- g. If the QDM data element, MODERATE OR SEVERE LVSD, starts before or during Occurrence A of Encounter Performed the QDM data element, NURSING FACILITY VISIT, equals No, proceed to check next Diagnosis Active.
- h. If the QDM data element, MODERATE OR SEVERE LVSD, starts before or during Occurrence A of Encounter Performed the QDM data element, NURSING FACILITY VISIT, equals Yes, include in Eligible Population Count, which is represented by letter B in the sample calculation listed at the end of this document. Letter B equals 8 patients and proceed to the Numerator.
- i. If the QDM data element, MODERATE OR SEVERE LVSD, starts before or during Occurrence A of Encounter Performed the QDM data element, OFFICE VISIT, equals No, proceed to check next Diagnosis Active.
- j. If the QDM data element, MODERATE OR SEVERE LVSD, starts before or during Occurrence A of Encounter Performed the QDM data element, OFFICE VISIT, equals Yes, include in Eligible Population Count, which is represented by letter B in the sample calculation listed at the end of this document. Letter B equals 8 patients and proceed to the Numerator.
- k. If the QDM data element, MODERATE OR SEVERE LVSD, starts before or during Occurrence A of Encounter Performed the QDM data element, OUTPATIENT CONSULTATION, equals No, proceed to check next Diagnosis Active.
- l. If the QDM data element, MODERATE OR SEVERE LVSD, starts before or during Occurrence A of Encounter Performed the QDM data element, OUTPATIENT CONSULTATION, equals Yes, include in Eligible Population Count, which is represented by letter B in the sample calculation listed at the end of this document. Letter B equals 8 patients and proceed to the Numerator.
- m. If the QDM data element, MODERATE OR SEVERE LVSD, starts before or during Occurrence A of Encounter Performed the QDM data element, FACE-TO FACE INTERACTION, equals No, proceed to check next Diagnosis Active.
- n. If the QDM data element, MODERATE OR SEVERE LVSD, starts before or during Occurrence A of Encounter Performed the QDM data element, FACE-TO FACE INTERACTION, equals Yes, include in Eligible Population Count, which is represented by letter B in the sample calculation listed at the end of this document. Letter B equals 8 patients and proceed to the Numerator.

9. Check Diagnosis Active:
- a. If the QDM data element, LEFT VENTRICULAR SYSTOLIC DYSFUNCTION (severity: moderate or severe), starts before or during Occurrence A of Encounter Performed the QDM data element, CARE SERVICES IN LONG-TERM RESIDENTIAL FACILITY, equals No, proceed to check next Diagnosis Active.
 - b. If the QDM data element, LEFT VENTRICULAR SYSTOLIC DYSFUNCTION (severity: moderate or severe), starts before or during Occurrence A of Encounter Performed the QDM data element, CARE SERVICES IN LONG-TERM RESIDENTIAL FACILITY, equals Yes, include in Eligible Population Count, which is represented by letter B in the sample calculation listed at the end of this document. Letter B equals 8 patients and continue on to the Numerator.
 - c. If the QDM data element, LEFT VENTRICULAR SYSTOLIC DYSFUNCTION (severity: moderate or severe), starts before or during Occurrence A of Encounter Performed the QDM data element, DISCHARGE SERVICES – HOSPITAL INPATIENT, equals No, proceed to check next Diagnosis Active.
 - d. If the QDM data element, LEFT VENTRICULAR SYSTOLIC DYSFUNCTION (severity: moderate or severe), starts before or during Occurrence A of Encounter Performed the QDM data element, DISCHARGE SERVICES – HOSPITAL INPATIENT, equals Yes, include in Eligible Population Count, which is represented by letter B in the sample calculation listed at the end of this document. Letter B equals 8 patients and continue on to the Numerator.
 - e. If the QDM data element, LEFT VENTRICULAR SYSTOLIC DYSFUNCTION (severity: moderate or severe), starts before or during Occurrence A of Encounter Performed the QDM data element, HOME HEALTHCARE SERVICES, equals No, proceed to check next Diagnosis Active.
 - f. If the QDM data element, LEFT VENTRICULAR SYSTOLIC DYSFUNCTION (severity: moderate or severe), starts before or during Occurrence A of Encounter Performed the QDM data element, HOME HEALTHCARE SERVICES, equals Yes, include in Eligible Population Count, which is represented by letter B in the sample calculation listed at the end of this document. Letter B equals 8 patients and continue on to the Numerator.
 - g. If the QDM data element, LEFT VENTRICULAR SYSTOLIC DYSFUNCTION (severity: moderate or severe), starts before or during Occurrence A of Encounter Performed the QDM data element, NURSING FACILITY VISIT, equals No, proceed to check next Diagnosis Active.
 - h. If the QDM data element, LEFT VENTRICULAR SYSTOLIC DYSFUNCTION (severity: moderate or severe), starts before or during Occurrence A of Encounter Performed the QDM data element, NURSING FACILITY VISIT, equals Yes, include in Eligible Population Count, which is represented by letter B in the sample calculation listed at the end of this document. Letter B equals 8 patients and continue on to the Numerator.
 - i. If the QDM data element, LEFT VENTRICULAR SYSTOLIC DYSFUNCTION (severity: moderate or severe), starts before or during Occurrence A of Encounter Performed the QDM data element, OFFICE VISIT, equals No, proceed to check next Diagnosis Active.
 - j. If the QDM data element, LEFT VENTRICULAR SYSTOLIC DYSFUNCTION (severity: moderate or severe), starts before or during Occurrence A of Encounter Performed the QDM data element, OFFICE VISIT, equals Yes,

include in Eligible Population Count, which is represented by letter B in the sample calculation listed at the end of this document. Letter B equals 8 patients and continue on to the Numerator.

- k. If the QDM data element, LEFT VENTRICULAR SYSTOLIC DYSFUNCTION (severity: moderate or severe), starts before or during Occurrence A of Encounter Performed the QDM data element, OUTPATIENT CONSULTATION, equals No, proceed to check next Diagnosis Active.
- l. If the QDM data element, LEFT VENTRICULAR SYSTOLIC DYSFUNCTION (severity: moderate or severe), starts before or during Occurrence A of Encounter Performed the QDM data element, OUTPATIENT CONSULTATION, equals Yes, include in Eligible Population Count, which is represented by letter B in the sample calculation listed at the end of this document. Letter B equals 8 patients and continue on to the Numerator.
- m. If the QDM data element, LEFT VENTRICULAR SYSTOLIC DYSFUNCTION (severity: moderate or severe), starts before or during Occurrence A of Encounter Performed the QDM data element, FACE-TO FACE INTERACTION, equals No, do not include in the Eligible Population. Stop Processing.
- n. If the QDM data element, LEFT VENTRICULAR SYSTOLIC DYSFUNCTION (severity: moderate or severe), starts before or during Occurrence A of Encounter Performed the QDM data element, FACE-TO FACE INTERACTION, equals Yes, include in Eligible Population Count, which is represented by letter B in the sample calculation listed at the end of this document. Letter B equals 8 patients and continue on to the Numerator.

10. Start Numerator

11. Check Medication Order:

- a. If the QDM data element, ACE INHIBITOR OR ARB, during Occurrence A of Encounter Performed the QDM data element, CARE SERVICES IN LONG-TERM RESIDENTIAL FACILITY, equals No, proceed to check next Medication Order.
- b. If the QDM data element, ACE INHIBITOR OR ARB, during Occurrence A of Encounter Performed the QDM data element, CARE SERVICES IN LONG-TERM RESIDENTIAL FACILITY, equals Yes, include in Numerator Count, which is represented by letter A in the sample calculation listed at the end of this document. Letter A equals 5 patients. Stop Processing.
- c. If the QDM data element, ACE INHIBITOR OR ARB, during Occurrence A of Encounter Performed the QDM data element, DISCHARGE SERVICES – HOSPITAL INPATIENT, equals No, proceed to check next Medication Order.
- d. If the QDM data element, ACE INHIBITOR OR ARB, during Occurrence A of Encounter Performed the QDM data element, DISCHARGE SERVICES – HOSPITAL INPATIENT, equals Yes, include in Numerator Count, which is represented by letter A in the sample calculation listed at the end of this document. Letter A equals 5 patients. Stop Processing.
- e. If the QDM data element, ACE INHIBITOR OR ARB, during Occurrence A of Encounter Performed the QDM data element, HOME HEALTHCARE SERVICES, equals No, proceed to check next Medication Order.
- f. If the QDM data element, ACE INHIBITOR OR ARB, during Occurrence A of Encounter Performed the QDM data element, HOME HEALTHCARE SERVICES, equals Yes, include in Numerator Count, which is represented by

letter A in the sample calculation listed at the end of this document. Letter A equals 5 patients. Stop Processing.

- g. If the QDM data element, ACE INHIBITOR OR ARB, during Occurrence A of Encounter Performed the QDM data element, NURSING FACILITY VISIT, equals No, proceed to check next Medication Order.
- h. If the QDM data element, ACE INHIBITOR OR ARB, during Occurrence A of Encounter Performed the QDM data element, NURSING FACILITY VISIT, equals Yes, include in Numerator Count, which is represented by letter A in the sample calculation listed at the end of this document. Letter A equals 5 patients. Stop Processing.
- i. If the QDM data element, ACE INHIBITOR OR ARB, during Occurrence A of Encounter Performed the QDM data element, OFFICE VISIT, equals No, proceed to check next Medication Order.
- j. If the QDM data element, ACE INHIBITOR OR ARB, during Occurrence A of Encounter Performed the QDM data element, OFFICE VISIT, equals include in Numerator Count, which is represented by letter A in the sample calculation listed at the end of this document. Letter A equals 5 patients. Stop Processing.
- k. If the QDM data element, ACE INHIBITOR OR ARB, during Occurrence A of Encounter Performed the QDM data element, OUTPATIENT CONSULTATION, equals No, proceed to check next Medication Order.
- l. If the QDM data element, ACE INHIBITOR OR ARB, during Occurrence A of Encounter Performed the QDM data element, OUTPATIENT CONSULTATION, equals Yes, include in Numerator Count, which is represented by letter A in the sample calculation listed at the end of this document. Letter A equals 5 patients. Stop Processing.
- m. If the QDM data element, ACE INHIBITOR OR ARB, during Occurrence A of Encounter Performed the QDM data element, FACE-TO FACE INTERACTION, equals No, proceed to check Medication Active.
- n. If the QDM data element, ACE INHIBITOR OR ARB, during Occurrence A of Encounter Performed the QDM data element, FACE-TO FACE INTERACTION, equals Yes, include in Numerator Count, which is represented by letter A in the sample calculation listed at the end of this document. Letter A equals 5 patients. Stop Processing.

12. Check Medication Active:

- a. If Occurrence A of Medication Active the QDM data element, ACE INHIBITOR OR ARB, starts before or during but does not end before Occurrence A of Encounter Performed the QDM data element, CARE SERVICES IN LONG-TERM RESIDENTIAL FACILITY, equals No, proceed to check next Medication Active.
- b. If Occurrence A of Medication Active the QDM data element, ACE INHIBITOR OR ARB, starts before or during but does not end before Occurrence A of Encounter Performed the QDM data element, CARE SERVICES IN LONG-TERM RESIDENTIAL FACILITY, equals Yes, include in Numerator Count, which is represented by letter A in the sample calculation listed at the end of this document. Letter A equals 5 patients. Stop Processing.
- c. If Occurrence A of Medication Active the QDM data element, ACE INHIBITOR OR ARB, starts before or during but does not end before Occurrence A of Encounter Performed the QDM data element, DISCHARGE SERVICES – HOSPITAL INPATIENT, equals No, proceed to check next Medication Active.

- d. If Occurrence A of Medication Active the QDM data element, ACE INHIBITOR OR ARB, starts before or during but does not end before Occurrence A of Encounter Performed the QDM data element, DISCHARGE SERVICES – HOSPITAL INPATIENT, equals Yes, include in Numerator Count, which is represented by letter A in the sample calculation listed at the end of this document. Letter A equals 5 patients. Stop Processing.
- e. If Occurrence A of Medication Active the QDM data element, ACE INHIBITOR OR ARB, starts before or during but does not end before Occurrence A of Encounter Performed the QDM data element, HOME HEALTHCARE SERVICES, equals No, proceed to check next Medication Active.
- f. If Occurrence A of Medication Active the QDM data element, ACE INHIBITOR OR ARB, starts before or during but does not end before Occurrence A of Encounter Performed the QDM data element, HOME HEALTHCARE SERVICES, equals Yes, include in Numerator Count, which is represented by letter A in the sample calculation listed at the end of this document. Letter A equals 5 patients. Stop Processing.
- g. If Occurrence A of Medication Active the QDM data element, ACE INHIBITOR OR ARB, starts before or during but does not end before Occurrence A of Encounter Performed the QDM data element, NURSING FACILITY VISIT, equals No, proceed to check next Medication Active.
- h. If Occurrence A of Medication Active the QDM data element, ACE INHIBITOR OR ARB, starts before or during but does not end before Occurrence A of Encounter Performed the QDM data element, NURSING FACILITY VISIT, equals Yes, include in Numerator Count, which is represented by letter A in the sample calculation listed at the end of this document. Letter A equals 5 patients. Stop Processing.
- i. If Occurrence A of Medication Active the QDM data element, ACE INHIBITOR OR ARB, starts before or during but does not end before Occurrence A of Encounter Performed the QDM data element, OFFICE VISIT, equals No, proceed to check next Medication Active.
- j. If Occurrence A of Medication Active the QDM data element, ACE INHIBITOR OR ARB, starts before or during but does not end before Occurrence A of Encounter Performed the QDM data element, OFFICE VISIT, equals Yes, include in Numerator Count, which is represented by letter A in the sample calculation listed at the end of this document. Letter A equals 5 patients. Stop Processing.
- k. If Occurrence A of Medication Active the QDM data element, ACE INHIBITOR OR ARB, starts before or during but does not end before Occurrence A of Encounter Performed the QDM data element, OUTPATIENT CONSULTATION, equals No, proceed to check next Medication Active.
- l. If Occurrence A of Medication Active the QDM data element, ACE INHIBITOR OR ARB, starts before or during but does not end before Occurrence A of Encounter Performed the QDM data element, OUTPATIENT CONSULTATION, equals Yes, include in Numerator Count, which is represented by letter A in the sample calculation listed at the end of this document. Letter A equals 5 patients. Stop Processing.
- m. If Occurrence A of Medication Active the QDM data element, ACE INHIBITOR OR ARB, starts before or during but does not end before Occurrence A of Encounter Performed the QDM data element, FACE-TO FACE INTERACTION, equals No, proceed to Denominator Exceptions.

- n. If Occurrence A of Medication Active the QDM data element, ACE INHIBITOR OR ARB, starts before or during but does not end before Occurrence A of Encounter Performed the QDM data element, FACE-TO FACE INTERACTION, equals Yes, include in Numerator Count, which is represented by letter A in the sample calculation listed at the end of this document. Letter A equals 5 patients. Stop Processing.
13. Check Denominator Exceptions
14. Check Medication Order Not Done:
- a. If the QDM data element, MEDICAL REASON, or the QDM data element, PATIENT REASON, or the QDM data element, SYSTEM REASON for ACE Inhibitor or ARB Ingredient Grouping Value Set starts during Occurrence A of Encounter Performed the QDM data element CARE SERVICES IN LONG-TERM RESIDENTIAL FACILITY equals No, do not include in the Denominator Exception Count and proceed to check next Medication Order Not Done.
 - b. If the QDM data element, MEDICAL REASON, or the QDM data element, PATIENT REASON, or the QDM data element, SYSTEM REASON for ACE Inhibitor or ARB Ingredient Grouping Value Set starts during Occurrence A of Encounter Performed the QDM data element CARE SERVICES IN LONG-TERM RESIDENTIAL FACILITY equals Yes, include in Denominator Exception Count, which is represented by letter C in the sample calculation listed at the end of this document. Letter C¹ equals 1 patient. Stop Processing.
 - c. If the QDM data element, MEDICAL REASON, or the QDM data element, PATIENT REASON, or the QDM data element, SYSTEM REASON for ACE Inhibitor or ARB Ingredient Grouping Value Set starts during Occurrence A of Encounter Performed the QDM data element HOME HEALTHCARE SERVICES equals No, do not include in the Denominator Exception Count and proceed to check next Medication Order Not Done.
 - d. If the QDM data element, MEDICAL REASON, or the QDM data element, PATIENT REASON, or the QDM data element, SYSTEM REASON for ACE Inhibitor or ARB Ingredient Grouping Value Set starts during Occurrence A of Encounter Performed the QDM data element HOME HEALTHCARE SERVICES equals Yes, include in Denominator Exception Count, which is represented by letter C in the sample calculation listed at the end of this document. Letter C¹ equals 1 patient. Stop Processing.
 - e. If the QDM data element, MEDICAL REASON, or the QDM data element, PATIENT REASON, or the QDM data element, SYSTEM REASON for ACE Inhibitor or ARB Ingredient Grouping Value Set starts during Occurrence A of Encounter Performed the QDM data element NURSING FACILITY VISIT equals No, do not include in the Denominator Exception Count and proceed to check next Medication Order Not Done.
 - f. If the QDM data element, MEDICAL REASON, or the QDM data element, PATIENT REASON, or the QDM data element, SYSTEM REASON for ACE Inhibitor or ARB Ingredient Grouping Value Set starts during Occurrence A of Encounter Performed the QDM data element NURSING FACILITY VISIT equals Yes, include in Denominator Exception Count, which is represented by letter C in the sample calculation listed at the end of this document. Letter C¹ equals 1 patient. Stop Processing.

- g. If the QDM data element, MEDICAL REASON, or the QDM data element, PATIENT REASON, or the QDM data element, SYSTEM REASON for ACE Inhibitor or ARB Ingredient Grouping Value Set starts during Occurrence A of Encounter Performed the QDM data element OFFICE VISIT equals No, do not include in the Denominator Exception Count and proceed to check next Medication Order Not Done.
- h. If the QDM data element, MEDICAL REASON, or the QDM data element, PATIENT REASON, or the QDM data element, SYSTEM REASON for ACE Inhibitor or ARB Ingredient Grouping Value Set starts during Occurrence A of Encounter Performed the QDM data element OFFICE VISIT equals Yes, include in Denominator Exception Count, which is represented by letter C in the sample calculation listed at the end of this document. Letter C¹ equals 1 patient. Stop Processing.
- i. If the QDM data element, MEDICAL REASON, or the QDM data element, PATIENT REASON, or the QDM data element, SYSTEM REASON for ACE Inhibitor or ARB Ingredient Grouping Value Set starts during Occurrence A of Encounter Performed the QDM data element OUTPATIENT CONSULTATION equals No, do not include in the Denominator Exception Count and proceed to check next Medication Order Not Done.
- j. If the QDM data element, MEDICAL REASON, or the QDM data element, PATIENT REASON, or the QDM data element, SYSTEM REASON for ACE Inhibitor or ARB Ingredient Grouping Value Set starts during Occurrence A of Encounter Performed the QDM data element OUTPATIENT CONSULTATION equals Yes, include in Denominator Exception Count, which is represented by letter C in the sample calculation listed at the end of this document. Letter C¹ equals 1 patient. Stop Processing.
- k. If the QDM data element, MEDICAL REASON, or the QDM data element, PATIENT REASON, or the QDM data element, SYSTEM REASON for ACE Inhibitor or ARB Ingredient Grouping Value Set starts during Occurrence A of Encounter Performed the QDM data element FACE-TO-FACE INTERACTION equals No, do not include in the Denominator Exception Count and proceed to check next Medication Order Not Done.
- l. If the QDM data element, MEDICAL REASON, or the QDM data element, PATIENT REASON, or the QDM data element, SYSTEM REASON for ACE Inhibitor or ARB Ingredient Grouping Value Set starts during Occurrence A of Encounter Performed the QDM data element FACE-TO-FACE INTERACTION equals Yes, include in Denominator Exception Count, which is represented by letter C in the sample calculation listed at the end of this document. Letter C¹ equals 1 patient. Stop Processing.
- m. If the QDM data element, MEDICAL REASON, or the QDM data element, PATIENT REASON, or the QDM data element, SYSTEM REASON for ACE Inhibitor or ARB Ingredient Grouping Value Set starts during Occurrence A of Encounter Performed the QDM data element DISCHARGE SERVICES – HOSPITAL INPATIENT equals No, do not include in the Denominator Exception Count and proceed to check Communication from Patient to Provider.
- n. If the QDM data element, MEDICAL REASON, or the QDM data element, PATIENT REASON, or the QDM data element, SYSTEM REASON for ACE Inhibitor or ARB Ingredient Grouping Value Set starts during Occurrence A of Encounter Performed the QDM data element DISCHARGE SERVICES – HOSPITAL INPATIENT equals Yes, include in Denominator Exception Count,

which is represented by letter C in the sample calculation listed at the end of this document. Letter C¹ equals 1 patient. Stop Processing.

15. Check Communication from Patient to Provider:
 - a. If the QDM data element, PATIENT REASON FOR ACE INHIBITOR OR ARB DECLINE, during Encounter Performed the QDM data element CARE SERVICES IN LONG-TERM RESIDENTIAL FACILITY, equals No, proceed to check next Communication from Patient to Provider.
 - b. If the QDM data element, PATIENT REASON FOR ACE INHIBITOR OR ARB DECLINE, during Encounter Performed the QDM data element CARE SERVICES IN LONG-TERM RESIDENTIAL FACILITY, equals Yes, include in Denominator Exception Count, which is represented by letter C in the sample calculation listed at the end of this document. Letter C² equals 1 patient. Stop Processing.
 - c. If the QDM data element, PATIENT REASON FOR ACE INHIBITOR OR ARB DECLINE, during Encounter Performed the QDM data element HOME HEALTHCARE SERVICES, equals No, proceed to check next Communication from Patient to Provider.
 - d. If the QDM data element, PATIENT REASON FOR ACE INHIBITOR OR ARB DECLINE, during Encounter Performed the QDM data element HOME HEALTHCARE SERVICES, equals Yes, include in Denominator Exception Count, which is represented by letter C in the sample calculation listed at the end of this document. Letter C² equals 1 patient. Stop Processing.
 - e. If the QDM data element, PATIENT REASON FOR ACE INHIBITOR OR ARB DECLINE, during Encounter Performed the QDM data element NURSING FACILITY VISIT, equals No, proceed to check next Communication from Patient to Provider.
 - f. If the QDM data element, PATIENT REASON FOR ACE INHIBITOR OR ARB DECLINE, during Encounter Performed the QDM data element NURSING FACILITY VISIT, equals Yes, include in Denominator Exception Count, which is represented by letter C in the sample calculation listed at the end of this document. Letter C² equals 1 patient. Stop Processing.
 - g. If the QDM data element, PATIENT REASON FOR ACE INHIBITOR OR ARB DECLINE, during Encounter Performed the QDM data element OFFICE VISIT, equals No, proceed to check next Communication from Patient to Provider.
 - h. If the QDM data element, PATIENT REASON FOR ACE INHIBITOR OR ARB DECLINE, during Encounter Performed the QDM data element OFFICE VISIT, equals Yes, include in Denominator Exception Count, which is represented by letter C in the sample calculation listed at the end of this document. Letter C² equals 1 patient. Stop Processing.
 - i. If the QDM data element, PATIENT REASON FOR ACE INHIBITOR OR ARB DECLINE, during Encounter Performed the QDM data element OUTPATIENT CONSULTATION, equals No, proceed to check next Communication from Patient to Provider.
 - j. If the QDM data element, PATIENT REASON FOR ACE INHIBITOR OR ARB DECLINE, during Encounter Performed the QDM data element OUTPATIENT CONSULTATION, equals Yes, include in Denominator Exception Count, which is represented by letter C in the sample calculation listed at the end of this document. Letter C² equals 1 patient. Stop Processing.
 - k. If the QDM data element, PATIENT REASON FOR ACE INHIBITOR OR ARB DECLINE, during Encounter Performed the QDM data element FACE-TO-FACE

INTERACTION, equals No, proceed to check next Communication from Patient to Provider.

- l. If the QDM data element, PATIENT REASON FOR ACE INHIBITOR OR ARB DECLINE, during Encounter Performed the QDM data element FACE-TO-FACE INTERACTION, equals Yes, include in Denominator Exception Count, which is represented by letter C in the sample calculation listed at the end of this document. Letter C² equals 1 patient. Stop Processing.
 - m. If the QDM data element, PATIENT REASON FOR ACE INHIBITOR OR ARB DECLINE, during Encounter Performed the QDM data element DISCHARGE SERVICES – HOSPITAL INPATIENT, equals No, proceed to check Medication Allergy.
 - n. If the QDM data element, PATIENT REASON FOR ACE INHIBITOR OR ARB DECLINE, during Encounter Performed the QDM data element DISCHARGE SERVICES – HOSPITAL INPATIENT, equals Yes, include in Denominator Exception Count, which is represented by letter C in the sample calculation listed at the end of this document. Letter C² equals 1 patient. Stop Processing.
16. Check Medication Allergy:
- a. If Occurrence A of the QDM data element, ACE INHIBITOR OR ARB INGREDIENT, starts before or during but does not end before start of Occurrence A of Encounter Performed the QDM data element, CARE SERVICES IN LONG-TERM RESIDENTIAL FACILITY, equals No, proceed to check next Medication Allergy.
 - b. If Occurrence A of the QDM data element, ACE INHIBITOR OR ARB INGREDIENT, starts before or during but does not end before start of Occurrence A of Encounter Performed the QDM data element, CARE SERVICES IN LONG-TERM RESIDENTIAL FACILITY, equals Yes, include in Denominator Exception Count, which is represented by letter C in the sample calculation listed at the end of this document. Letter C² equals 1 patient. Stop Processing.
 - c. If Occurrence A of the QDM data element, ACE INHIBITOR OR ARB INGREDIENT, starts before or during but does not end before start of Occurrence A of Encounter Performed the QDM data element, DISCHARGE SERVICES – HOSPITAL INPATIENT, equals No, proceed to check next Medication Allergy.
 - d. If Occurrence A of the QDM data element, ACE INHIBITOR OR ARB INGREDIENT, starts before or during but does not end before start of Occurrence A of Encounter Performed the QDM data element, DISCHARGE SERVICES – HOSPITAL INPATIENT, equals Yes, include in Denominator Exception Count, which is represented by letter C in the sample calculation listed at the end of this document. Letter C² equals 1 patient. Stop Processing.
 - e. If Occurrence A of the QDM data element, ACE INHIBITOR OR ARB INGREDIENT, starts before or during but does not end before start of Occurrence A of Encounter Performed the QDM data element, HOME HEALTHCARE SERVICES, equals No, proceed to check next Medication Allergy.
 - f. If Occurrence A of the QDM data element, ACE INHIBITOR OR ARB INGREDIENT, starts before or during but does not end before start of Occurrence A of Encounter Performed the QDM data element, HOME HEALTHCARE SERVICES, equals Yes, include in Denominator Exception

Count, which is represented by letter C in the sample calculation listed at the end of this document. Letter C² equals 1 patient. Stop Processing.

- g. If Occurrence A of the QDM data element, ACE INHIBITOR OR ARB INGREDIENT, starts before or during but does not end before start of Occurrence A of Encounter Performed the QDM data element, NURSING FACILITY VISIT, equals No, proceed to check next Medication Allergy.
 - h. If Occurrence A of the QDM data element, ACE INHIBITOR OR ARB INGREDIENT, starts before or during but does not end before start of Occurrence A of Encounter Performed the QDM data element, NURSING FACILITY VISIT, equals Yes, include in Denominator Exception Count, which is represented by letter C in the sample calculation listed at the end of this document. Letter C² equals 1 patient. Stop Processing.
 - i. If Occurrence A of the QDM data element, ACE INHIBITOR OR ARB INGREDIENT, starts before or during but does not end before start of Occurrence A of Encounter Performed the QDM data element, OFFICE VISIT, equals No, proceed to check next Medication Allergy.
 - j. If Occurrence A of the QDM data element, ACE INHIBITOR OR ARB INGREDIENT, starts before or during but does not end before start of Occurrence A of Encounter Performed the QDM data element, OFFICE VISIT, equals Yes, include in Denominator Exception Count, which is represented by letter C in the sample calculation listed at the end of this document. Letter C² equals 1 patient. Stop Processing.
 - k. If Occurrence A of the QDM data element, ACE INHIBITOR OR ARB INGREDIENT, starts before or during but does not end before start of Occurrence A of Encounter Performed the QDM data element, OUTPATIENT CONSULTATION, equals No, proceed to check next Medication Allergy.
 - l. If Occurrence A of the QDM data element, ACE INHIBITOR OR ARB INGREDIENT, starts before or during but does not end before start of Occurrence A of Encounter Performed the QDM data element, OUTPATIENT CONSULTATION, equals Yes, include in Denominator Exception Count, which is represented by letter C in the sample calculation listed at the end of this document. Letter C² equals 1 patient. Stop Processing.
 - m. If Occurrence A of the QDM data element, ACE INHIBITOR OR ARB INGREDIENT, starts before or during but does not end before start of Occurrence A of Encounter Performed the QDM data element, FACE-TO FACE INTERACTION, equals No, proceed to check Medication Intolerance.
 - n. If Occurrence A of the QDM data element, ACE INHIBITOR OR ARB INGREDIENT, starts before or during but does not end before start of Occurrence A of Encounter Performed the QDM data element, FACE-TO FACE INTERACTION, equals Yes, include in Denominator Exception Count, which is represented by letter C in the sample calculation listed at the end of this document. Letter C² equals 1 patient. Stop Processing.
17. Check Medication Intolerance:
- a. If Occurrence A of the QDM data element, ACE INHIBITOR OR ARB, starts before or during but does not end before start of Occurrence A of Encounter Performed the QDM data element, CARE SERVICES IN LONG-TERM RESIDENTIAL FACILITY, equals No, proceed to check next Medication Intolerance.
 - b. If Occurrence A of the QDM data element, ACE INHIBITOR OR ARB, starts before or during but does not end before start of Occurrence A of Encounter

- Performed the QDM data element, CARE SERVICES IN LONG-TERM RESIDENTIAL FACILITY, equals Yes, include in Denominator Exception Count, which is represented by letter C in the sample calculation listed at the end of this document. Letter C² equals 1 patient. Stop Processing.
- c. If Occurrence A of the QDM data element, ACE INHIBITOR OR ARB, starts before or during but does not end before start of Occurrence A of Encounter Performed the QDM data element, DISCHARGE SERVICES – HOSPITAL INPATIENT, equals No, proceed to check next Medication Intolerance.
 - d. If Occurrence A of the QDM data element, ACE INHIBITOR OR ARB, starts before or during but does not end before start of Occurrence A of Encounter Performed the QDM data element, DISCHARGE SERVICES – HOSPITAL INPATIENT, equals Yes, include in Denominator Exception Count, which is represented by letter C in the sample calculation listed at the end of this document. Letter C² equals 1 patient. Stop Processing.
 - e. If Occurrence A of the QDM data element, ACE INHIBITOR OR ARB, starts before or during but does not end before start of Occurrence A of Encounter Performed the QDM data element, HOME HEALTHCARE SERVICES, equals No, proceed to check next Medication Intolerance.
 - f. If Occurrence A of the QDM data element, ACE INHIBITOR OR ARB, starts before or during but does not end before start of Occurrence A of Encounter Performed the QDM data element, HOME HEALTHCARE SERVICES, equals Yes, include in Denominator Exception Count, which is represented by letter C in the sample calculation listed at the end of this document. Letter C² equals 1 patient. Stop Processing.
 - g. If Occurrence A of the QDM data element, ACE INHIBITOR OR ARB, starts before or during but does not end before start of Occurrence A of Encounter Performed the QDM data element, NURSING FACILITY VISIT, equals No, proceed to check next Medication Intolerance.
 - h. If Occurrence A of the QDM data element, ACE INHIBITOR OR ARB, starts before or during but does not end before start of Occurrence A of Encounter Performed the QDM data element, NURSING FACILITY VISIT, equals Yes, include in Denominator Exception Count, which is represented by letter C in the sample calculation listed at the end of this document. Letter C² equals 1 patient. Stop Processing.
 - i. If Occurrence A of the QDM data element, ACE INHIBITOR OR ARB, starts before or during but does not end before start of Occurrence A of Encounter Performed the QDM data element, OFFICE VISIT, equals No, proceed to check next Medication Intolerance.
 - j. If Occurrence A of the QDM data element, ACE INHIBITOR OR ARB, starts before or during but does not end before start of Occurrence A of Encounter Performed the QDM data element, OFFICE VISIT, equals Yes, include in Denominator Exception Count, which is represented by letter C in the sample calculation listed at the end of this document. Letter C² equals 1 patient. Stop Processing.
 - k. If Occurrence A of the QDM data element, ACE INHIBITOR OR ARB, starts before or during but does not end before start of Occurrence A of Encounter Performed the QDM data element, OUTPATIENT CONSULTATION, equals No, proceed to check next Medication Intolerance.
 - l. If Occurrence A of the QDM data element, ACE INHIBITOR OR ARB, starts before or during but does not end before start of Occurrence A of Encounter

Performed the QDM data element, OUTPATIENT CONSULTATION, equals Yes, include in Denominator Exception Count, which is represented by letter C in the sample calculation listed at the end of this document. Letter C² equals 1 patient. Stop Processing.

- m. If Occurrence A of the QDM data element, ACE INHIBITOR OR ARB, starts before or during but does not end before start of Occurrence A of Encounter Performed the QDM data element, FACE-TO FACE INTERACTION, equals No, proceed to check Diagnosis Active.
- n. If Occurrence A of the QDM data element, ACE INHIBITOR OR ARB, starts before or during but does not end before start of Occurrence A of Encounter Performed the QDM data element, FACE-TO FACE INTERACTION, equals Yes, include in Denominator Exception Count, which is represented by letter C in the sample calculation listed at the end of this document. Letter C² equals 1 patient. Stop Processing.

18. Check Diagnosis Active:

- a. If Occurrence A of the QDM data element, ALLERGY TO ACE INHIBITOR OR ARB, or the QDM data element, INTOLERANCE TO ACE INHIBITOR OR ARB, or the QDM data element, PREGNANCY, or the QDM data element, RENAL FAILURE DUE TO ACE INHIBITOR, starts before or during but does not end before start of Occurrence A of Encounter Performed the QDM data element, CARE SERVICES IN LONG-TERM RESIDENTIAL FACILITY, equals No, proceed to check next Diagnosis Active.
- b. If Occurrence A of the QDM data element, ALLERGY TO ACE INHIBITOR OR ARB, or the QDM data element, INTOLERANCE TO ACE INHIBITOR OR ARB, or the QDM data element, PREGNANCY, or the QDM data element, RENAL FAILURE DUE TO ACE INHIBITOR, starts before or during but does not end before start of Occurrence A of Encounter Performed the QDM data element, CARE SERVICES IN LONG-TERM RESIDENTIAL FACILITY, equals Yes, include in Denominator Exclusion Count, which is represented by letter C in the sample calculation listed at the end of this document. Letter C² equals 1 patient. Stop Processing.
- c. If Occurrence A of the QDM data element, ALLERGY TO ACE INHIBITOR OR ARB, or the QDM data element, INTOLERANCE TO ACE INHIBITOR OR ARB, or the QDM data element, PREGNANCY, or the QDM data element, RENAL FAILURE DUE TO ACE INHIBITOR, starts before or during but does not end before start of Occurrence A of Encounter Performed the QDM data element, DISCHARGE SERVICES – HOSPITAL INPATIENT, equals No, proceed to check next Diagnosis Active.
- d. If Occurrence A of the QDM data element, ALLERGY TO ACE INHIBITOR OR ARB, or the QDM data element, INTOLERANCE TO ACE INHIBITOR OR ARB, or the QDM data element, PREGNANCY, or the QDM data element, RENAL FAILURE DUE TO ACE INHIBITOR, starts before or during but does not end before start of Occurrence A of Encounter Performed the QDM data element, DISCHARGE SERVICES – HOSPITAL INPATIENT,, equals Yes, include in Denominator Exclusion Count, which is represented by letter C in the sample calculation listed at the end of this document. Letter C² equals 1 patient. Stop Processing.

- e. If Occurrence A of the QDM data element, ALLERGY TO ACE INHIBITOR OR ARB, or the QDM data element, INTOLERANCE TO ACE INHIBITOR OR ARB, or the QDM data element, PREGNANCY, or the QDM data element, RENAL FAILURE DUE TO ACE INHIBITOR, starts before or during but does not end before start of Occurrence A of Encounter Performed the QDM data element, HOME HEALTHCARE SERVICES, equals No, proceed to check next Diagnosis Active.
- f. If Occurrence A of the QDM data element, ALLERGY TO ACE INHIBITOR OR ARB, or the QDM data element, INTOLERANCE TO ACE INHIBITOR OR ARB, or the QDM data element, PREGNANCY, or the QDM data element, RENAL FAILURE DUE TO ACE INHIBITOR, starts before or during but does not end before start of Occurrence A of Encounter Performed the QDM data element, HOME HEALTHCARE SERVICES, equals Yes, include in Denominator Exclusion Count, which is represented by letter C in the sample calculation listed at the end of this document. Letter C² equals 1 patient. Stop Processing.
- g. If Occurrence A of the QDM data element, ALLERGY TO ACE INHIBITOR OR ARB, or the QDM data element, INTOLERANCE TO ACE INHIBITOR OR ARB, or the QDM data element, PREGNANCY, or the QDM data element, RENAL FAILURE DUE TO ACE INHIBITOR, starts before or during but does not end before start of Occurrence A of Encounter Performed the QDM data element, NURSING FACILITY VISIT, equals No, proceed to check next Diagnosis Active.
- h. If Occurrence A of the QDM data element, ALLERGY TO ACE INHIBITOR OR ARB, or the QDM data element, INTOLERANCE TO ACE INHIBITOR OR ARB, or the QDM data element, PREGNANCY, or the QDM data element, RENAL FAILURE DUE TO ACE INHIBITOR, starts before or during but does not end before start of Occurrence A of Encounter Performed the QDM data element, NURSING FACILITY VISIT, equals Yes, include in Denominator Exclusion Count, which is represented by letter C in the sample calculation listed at the end of this document. Letter C² equals 1 patient. Stop Processing.
- i. If Occurrence A of the QDM data element, ALLERGY TO ACE INHIBITOR OR ARB, or the QDM data element, INTOLERANCE TO ACE INHIBITOR OR ARB, or the QDM data element, PREGNANCY, or the QDM data element, RENAL FAILURE DUE TO ACE INHIBITOR, starts before or during but does not end before start of Occurrence A of Encounter Performed the QDM data element, OFFICE VISIT, equals No, proceed to check next Diagnosis Active.
- j. If Occurrence A of the QDM data element, ALLERGY TO ACE INHIBITOR OR ARB, or the QDM data element, INTOLERANCE TO ACE INHIBITOR OR ARB, or the QDM data element, PREGNANCY, or the QDM data element, RENAL FAILURE DUE TO ACE INHIBITOR, starts before or during but does not end before start of Occurrence A of Encounter Performed the QDM data element, OFFICE VISIT, equals Yes, include in Denominator Exclusion Count, which is represented by letter C in the sample calculation listed at the end of this document. Letter C² equals 1 patient. Stop Processing.
- k. If Occurrence A of the QDM data element, ALLERGY TO ACE INHIBITOR OR ARB, or the QDM data element, INTOLERANCE TO ACE INHIBITOR OR ARB, or the QDM data element, PREGNANCY, or the QDM data element, RENAL FAILURE DUE TO ACE INHIBITOR, starts before or during but does not end before start of Occurrence A of Encounter Performed the QDM data element, OUTPATIENT CONSULTATION, equals No, proceed to check next Diagnosis Active.

- l. If Occurrence A of the QDM data element, ALLERGY TO ACE INHIBITOR OR ARB, or the QDM data element, INTOLERANCE TO ACE INHIBITOR OR ARB, or the QDM data element, PREGNANCY, or the QDM data element, RENAL FAILURE DUE TO ACE INHIBITOR, starts before or during but does not end before start of Occurrence A of Encounter Performed the QDM data element, OUTPATIENT CONSULTATION, equals Yes, include in Denominator Exclusion Count, which is represented by letter C in the sample calculation listed at the end of this document. Letter C² equals 1 patient. Stop Processing.
- m. If Occurrence A of the QDM data element, ALLERGY TO ACE INHIBITOR OR ARB, or the QDM data element, INTOLERANCE TO ACE INHIBITOR OR ARB, or the QDM data element, PREGNANCY, or the QDM data element, RENAL FAILURE DUE TO ACE INHIBITOR, starts before or during but does not end before start of Occurrence A of Encounter Performed the QDM data element, FACE-TO-FACE INTERACTION, equals No, include in the No/Missing Data Submitted. Stop Processing.
- n. If Occurrence A of the QDM data element, ALLERGY TO ACE INHIBITOR OR ARB, or the QDM data element, INTOLERANCE TO ACE INHIBITOR OR ARB, or the QDM data element, PREGNANCY, or the QDM data element, RENAL FAILURE DUE TO ACE INHIBITOR, starts before or during but does not end before start of Occurrence A of Encounter Performed the QDM data element, FACE-TO-FACE INTERACTION, equals Yes, include in Denominator Exception Count, which is represented by letter C in the sample calculation listed at the end of this document. Letter C² equals 1 patient. Stop Processing.

SAMPLE CALCULATION:

Performance Rate

Numerator (a= 5 patients)

÷

Denominator (b=8 patients) – *Denominator Exclusions (N/A)* – Denominator Exceptions (c¹+c²=2 patients)

= 83.33%